



# How to keep supporting Your Parish through the new Offertory

Your parish's main income comes through the generosity of its parishioners. Across our diocese people like you contribute a total of £100,000 each week in their parish offerings. However when churches and church halls were closed by the pandemic many parishes immediately lost 90% of their income.

To limit the spread of the virus we are now advised to handle cash as little as possible and are unable to pass round the Offertory plate during Mass.

As churches reopen their doors they need your continuing support more than ever before.

Please continue to give to your parish Offertory through one of these new safe and easy methods.

## Support by standing order

This is still the best and easiest way to ensure your parish benefits from whatever regular giving you can afford.

To set up a standing order by your own telephone or internet banking you need the bank details of the parish where you wish to continue your regular offertory. These details can be found on your parish's standing order forms or by ringing your parish.

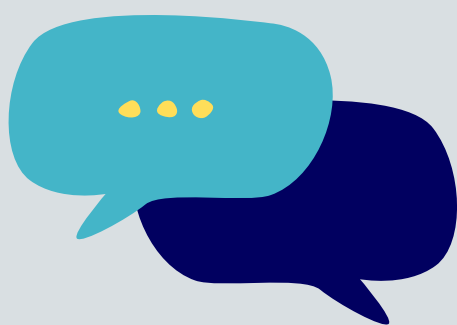
If you still can't find them please contact  
0113 261 8023 or [Louise.Ward@dioceseofleeds.org.uk](mailto:Louise.Ward@dioceseofleeds.org.uk)



## Support by text

Simply text the word CHURCH (+ the unique word for your parish) to 70500 to give £5.

Please feel free to use this flexibly by only using text giving once every few weeks or by giving more times in the same week if you are used to making larger donations.



## Support online

You can now continue your offering by selecting your parish from list on the new online offertory.



## Support by phone

To give by phone please call  
**0113 261 8023**

office hours (priority 1pm-3pm)



Visit the online parish Offertory:  
[www.dioceseofleeds.org.uk/  
supporting-your-parish](http://www.dioceseofleeds.org.uk/supporting-your-parish)

*giftaid it* : give more at no extra cost to you

Gift Aid allows charities to reclaim tax on donations made by UK taxpayers which means that your parish can claim back 25p from the HMRC for every £1 you donate.

You can register for Gift Aid online: [www.dioceseofleeds.org.uk/gift-aid-declaration](http://www.dioceseofleeds.org.uk/gift-aid-declaration)



# Thank you for your continued support!

For more information visit: [www.dioceseofleeds.org.uk/supporting-your-parish](http://www.dioceseofleeds.org.uk/supporting-your-parish)